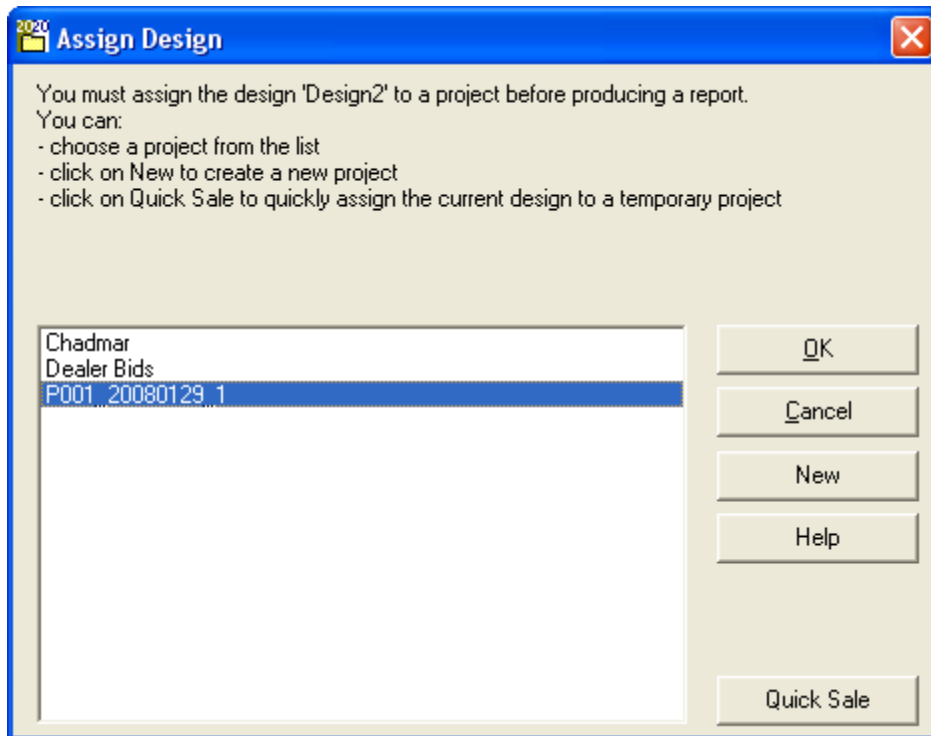
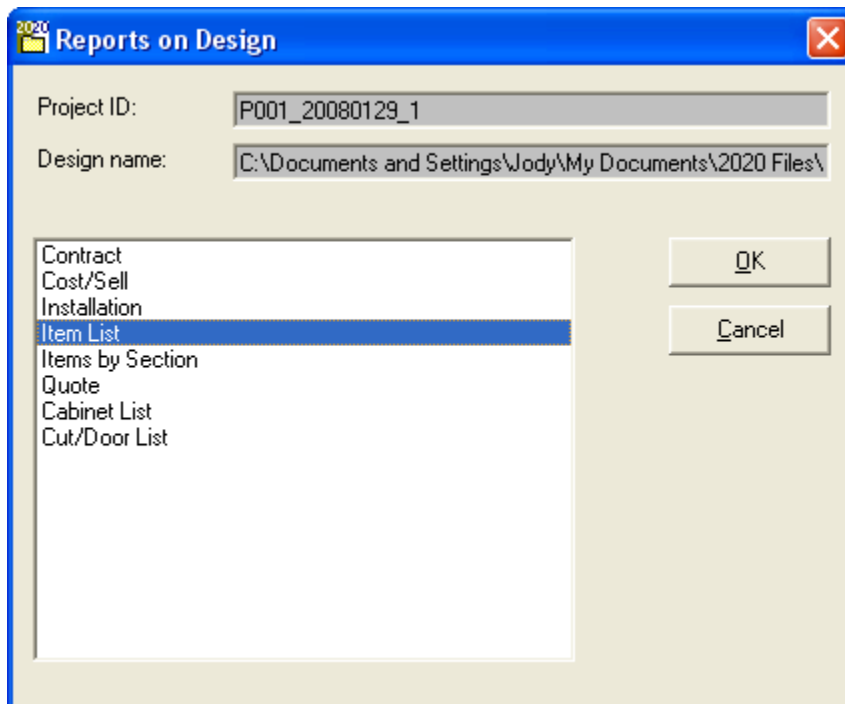


Import 20/20 Design into Winbid Instructions.

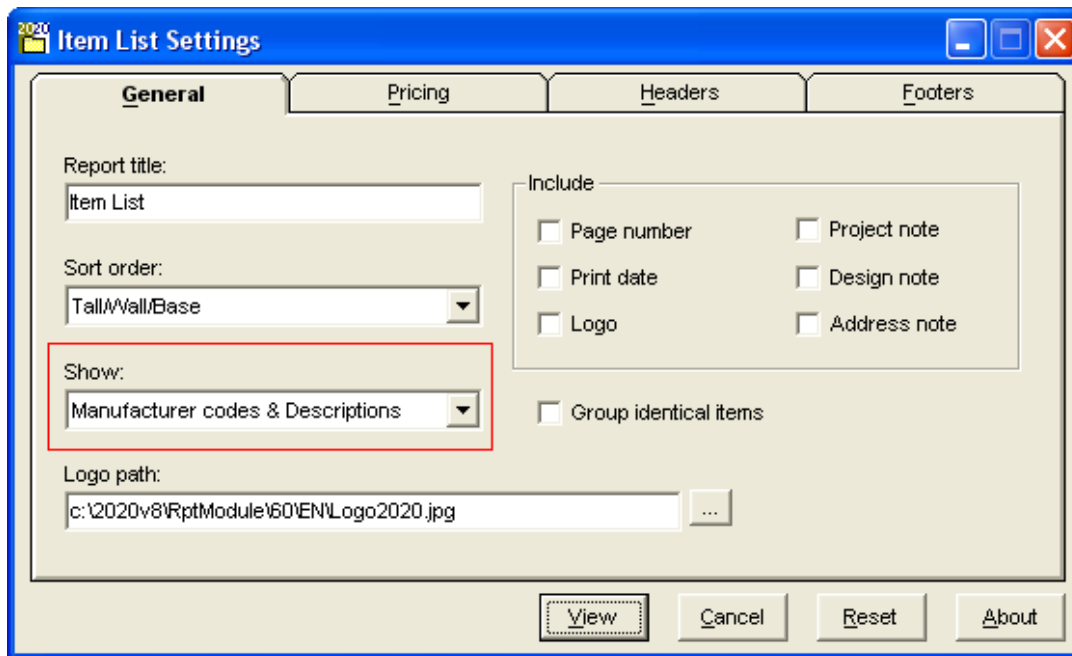
1. Open your design in the 20/20 Design software.
2. Click on the Reports Menu (Menus across the top) and click Reports on Design.
3. If an “Assign Design” window appears, Select a project and click OK



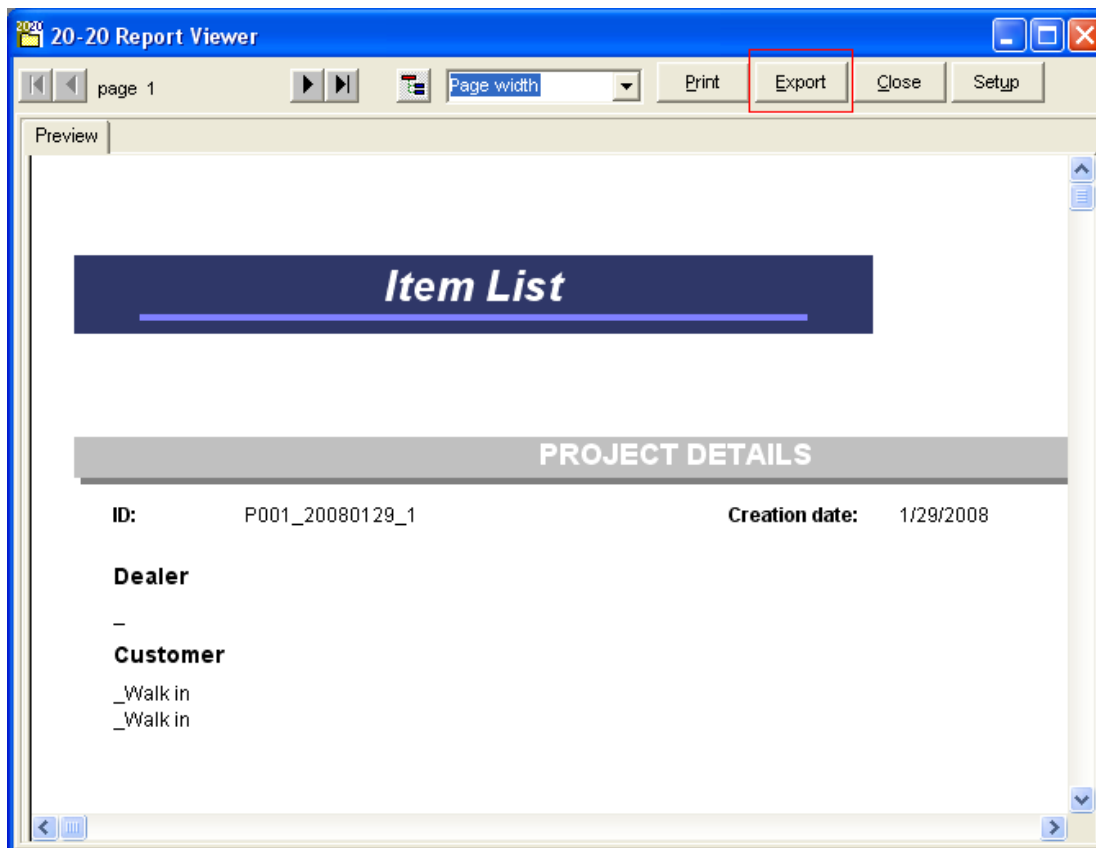
4. On the “Reports on Design” window select “Item List”. Click OK.



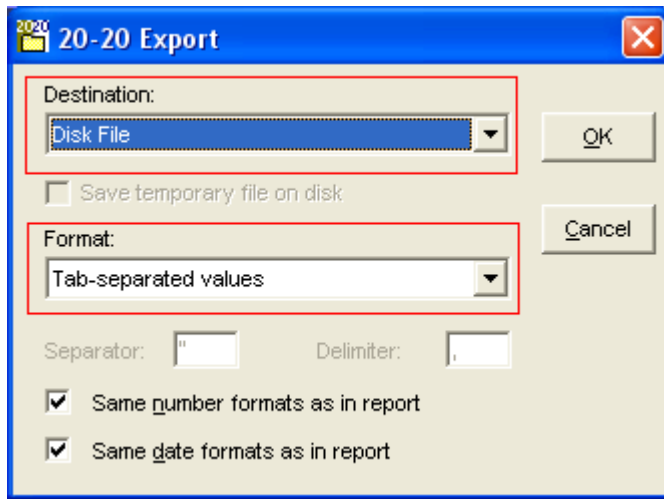
- On the “Items List” window, ensure the show dropdown box displays “Manufacturer Codes and Description”. Click “View”.



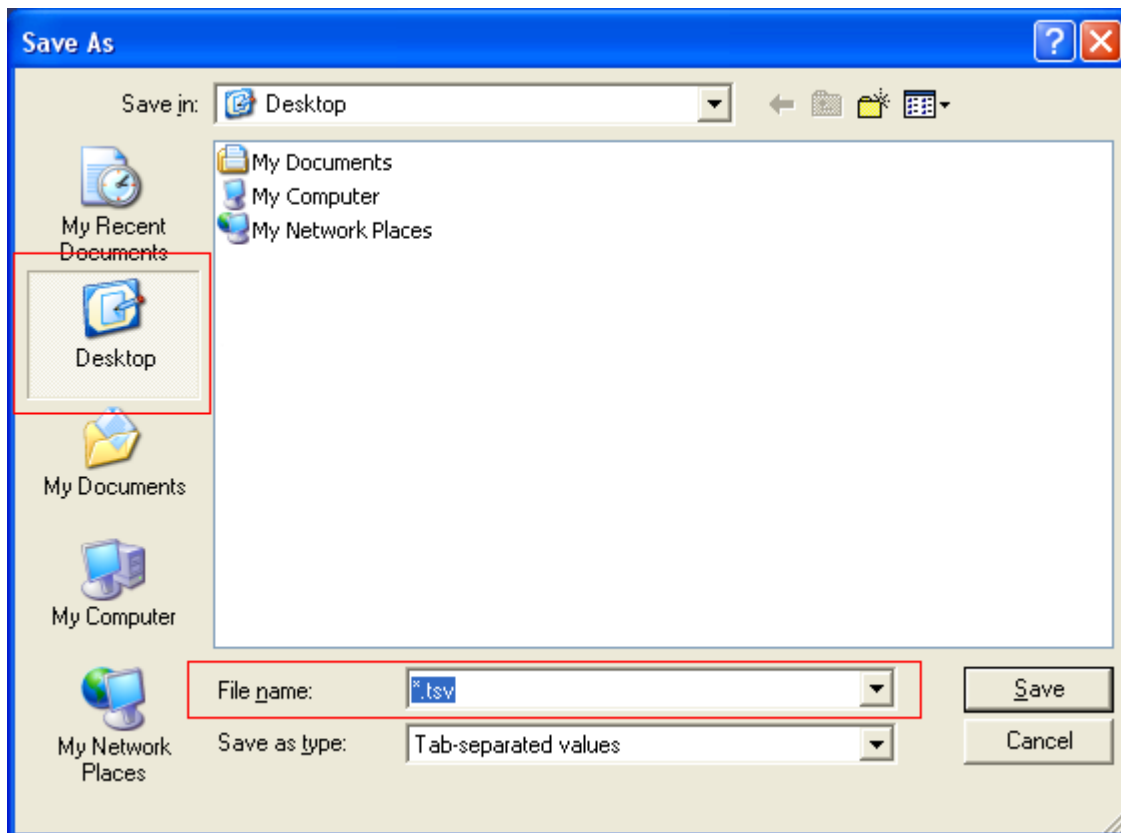
- From the “20-20 Report Viewer” click “Export”.



- On the “20-20 Export” windows ensure the “Destination” dropdown displays “Disk File” and the “Format” dropdown displays “Tab-separated values”. Click OK.



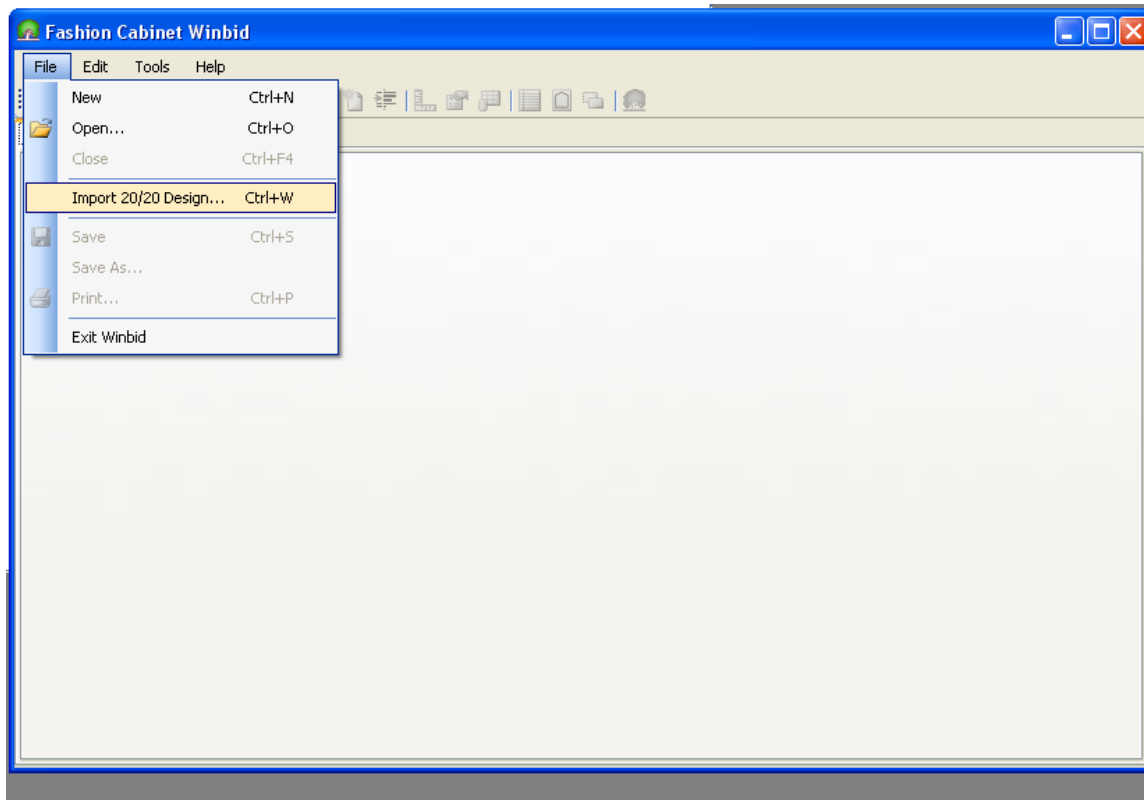
8. On the "Save As" window enter a file name and location. It is recommended that you click on "Desktop" so you can find the file easily later. Click Save.



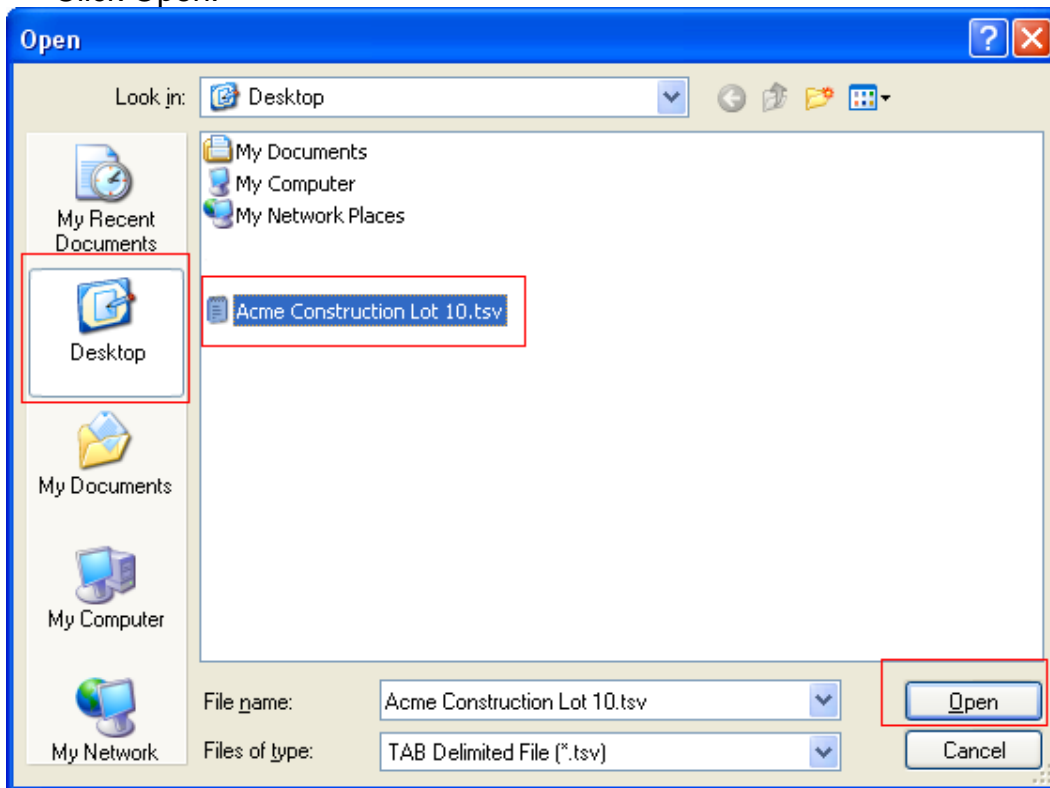
9. Close all 20/20 Design Windows.

10. Open Winbid 2.0

11. From the “File” menu (Top left corner), click “Import 20/20 Design”.



12. From the “Open” windows click Desktop and select the file you created earlier. Click Open.



13. Once Winbid opens the file, you can delete the tsv file from your desktop.